

## HA tag(4B2)单克隆抗体

**货号:** DE0612-100 $\mu$ l

**规格:** 100 $\mu$ l

**背景:** HA 标签源于人类流感病毒的红细胞凝集素表面抗原决定簇,98-106 氨基酸。在表达载体中被广泛用做一般的表位标签。HA 标签抗体帮助检测、分离和纯化蛋白。

**产品名称:** HA (4B2)标签单克隆抗体, 来源于小鼠。

**来源:** 这个抗体 (anti-HA 抗体) 是将合成的 HA 标签多肽偶联到 KLH 上之后, 免疫动物产生的抗体。

**浓度组分:** 0.5mg/ml 溶解在 pH7.4 的 PBS 溶液中, 包含 0.02%的叠氮钠和 50%甘油

**应用:** WB;Dot;ELISA

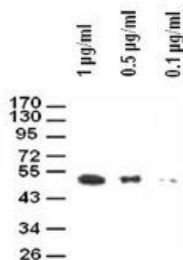
**推荐稀释浓度:** 1:500-1:5000

**同种型:** 小鼠 IgG1

**外观/储存/特异性:** 液体/-20 $^{\circ}$ C/所有物种

### 检测图

Anti-HA Monoclonal Antibody



Western blot 分析不同浓度的 HA 标签抗体

### WESTERN BLOTS

封闭:

用 5%脱脂奶粉 (1XPBS) 溶液孵育膜, 4 $^{\circ}$ C, 过夜

抗体孵育:

用 5%脱脂奶粉 (1XTBS,0.1% 吐温 20) 溶液稀释抗体, 室温,30min

## Anti-HA tag(4B2)Monoclonal Antibody

**Code Number:** DE0612-100 $\mu$ l

**Size:** 100 $\mu$ l

**BACKGROUND:** The HA Tag is derived from the human influenza hemagglutinin corresponding to amino acids 98-106. It has been extensively used as a general epitope Tag in expression vectors. This Tag facilitates the detection, isolation, and purification of the proteins.

**PRODUCT NAME:** Anti-HA Tag(4B2) Monoclonal Antibody

Produced in Mouse

**SOURCE:** This antibody is produced by immunizing animals with a synthetic HA tag peptide corresponding to KLH.

**CONCENTRATION:** 0.5mg/ml in PBS, pH7.4,containing 0.02% Sodium Azide and 50% glycerol

**APPLICATIONS:** WB;Dot;ELISA

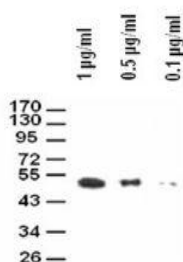
**RECOMMENDED DILUTION:** 1:500-1:5000

**ISOTYPE:** Mouse IgG1

**FORM/STORAGE/SPECIFICITY:** Liquid/-20 $^{\circ}$ C/All species

### TESTING IMAGE

Anti-HA Monoclonal Antibody



Western blot analysis of different concentration of Anti-HA Tag(4B2)Monoclonal Antibody

### FOR WESTERN BLOTS

Blocking:

Incubate the membrane with 5% Non-Fat Milk 1xPBS ,4 $^{\circ}$ C, overnight

Antibody Incubation:

Diluted antibody in 5% Non-Fat Milk

1XTBS,0.1% Tween-20,RT,30mis